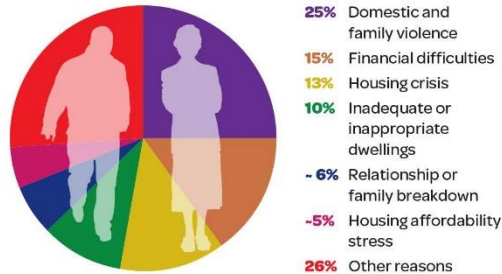


Why are they homeless?



From polling of people seeking support from specialist homeless services:



Homelessness

Estimated Number of Homeless Persons:

Change (%)	Population	2011		2016		Change in Number	
		Homeless as % of population	Homeless as % of population	Homeless as % of population	Homeless as % of population	Homeless as % of population	Homeless as % of population
	861	916	55	6.4	207,830	0.44	
	989	972	-17	-1.7	155,022	0.63	
	461	326	-135	-29.3	127,693	0.26	
	785	771	-14	-1.8	172,091	0.45	
	455	630	175	38.5	207,881	0.30	
	844	838	-6	-0.7	93,380	0.90	
	77	67	-10	-13.0	64,280	0.10	

Source: <http://www.greaterdandenong.com/document/18464/statistical-data-for-victorian-communities, Homelessness>

Note: these figures include persons living in what are defined as 'extremely overcrowded' conditions. See tab 'Explanation of overcrowding' for more, or for a complete explanation of methodology, go to: <http://www.abs.gov.au/ausstats/abs@.nsf/exnote/2049.0>

According to the Council of Homeless persons, people aged 55 or more made up 2,710, or approximately 12% of the recorded homeless population in the 2011 Census.

The 2016 Census shows significant increases in older homelessness since 2011.

- 29% increase in people aged 55 and over
- 47% increase in people aged 65-74
- 56% increase in older homeless women 65-74

Source: HAAG, https://www.oldertenants.org.au/sites/default/files/otv_june_2018_web.pdf

There has been a 56% increase in older homeless women 65-74 since the 2011

MISSION AUSTRALIA

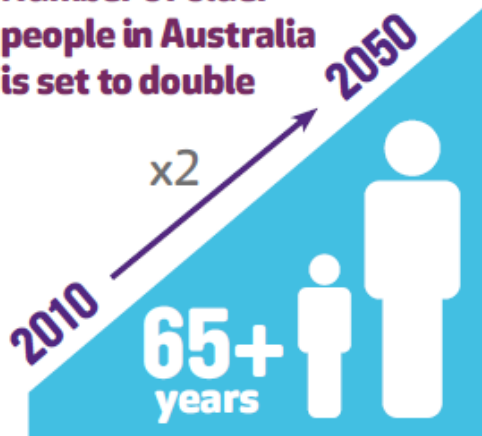
Ageing and Homelessness Solutions to a growing problem

6,475,000



People in Australia are over 55 years old (ABS 2016)

Number of older people in Australia is set to double



(Intergenerational report 2010)



21,600

people over 55 years asked for help from specialist homelessness services (AIHW 2016)

1 in 7



people experiencing homelessness are over 55 years old (ABS 2011)

Older people living in private rental accommodation

(ABS 2016)

14% of people aged 65-84 years old

11% of people aged 85+ years old

Rental properties that are affordable and appropriate

(Anglicare 2017)

for single people on age pension

1.62%

for couples on age pension

4.28%

This document is created by Lisa Tribuzio, Diversity Advisor from the North Metro Sector Development team. Diversity Advisors are funded by both the Victorian State Government and the Commonwealth and support HACC-PYP and CHSP funded organisations to undertake diversity planning. For any questions regarding this document, email lisat@hwpcp.org.au

© July 2018