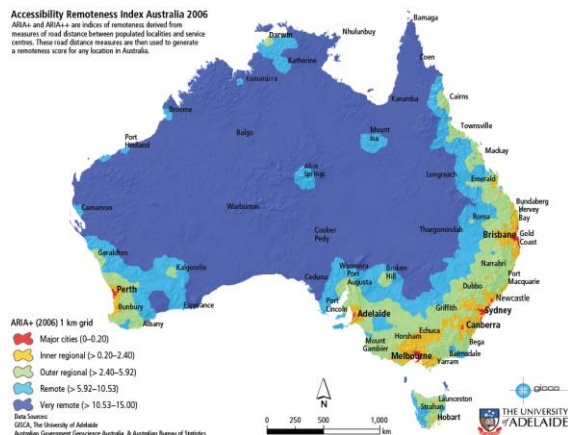
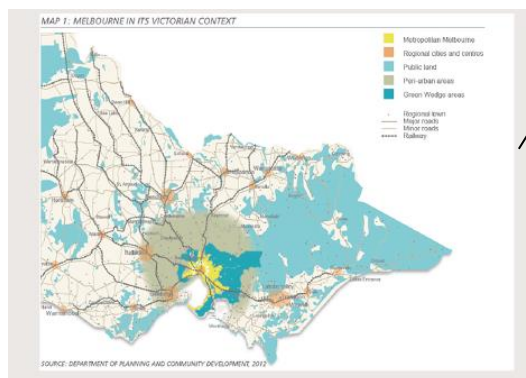


People who live in rural, remote of very remote areas



North Metro Melbourne does not have any remote or very remote areas according to the Accessibility remoteness index of Australia 2006. However there may be some areas where people are experiencing barriers to accessing services due to being in Peri-urban areas (Hume and Whittlesea) and Green wedge areas (Nillumbik).



Peri-urban areas exist in Hume and Whittlesea

Green Wedge areas exist in Nillumbik

Source <https://ajem.infoservices.com.au/items/AJEM-28-03-04>

Definition of Peri-urban

In general, the term refers to areas beyond the metropolitan fringe, at the interface between city and country but within the economic and social catchment of a large metropolitan area. Several authors have tried to simplify the definition by describing peri-urban areas as “areas on the urban periphery into which cities expand” or “which cities influence” (Buxton, 2011, p2).

Source: <https://blog.id.com.au/2017/population/what-is-a-peri-urban-area-and-how-are-they-changing/>

Green Wedge Areas

The non-urban areas of metropolitan Melbourne that lie outside the Urban Growth Boundary are known as **green wedges**. There are 12 designated green wedge areas across 17 municipalities which form a ring around the city.

Source: <https://www.planning.vic.gov.au/policy-and-strategy/green-wedges>

This document is created by Lisa Tribuzio, Diversity Advisor from the North Metro Sector Development team. Diversity Advisors are funded by both the Victorian State Government and the Commonwealth and support HACC-PYP and CHSP funded organisations to undertake diversity planning. For any questions regarding this document, email lisat@hwpcp.org.au

© July 2018

